

# ACTIVE WEAR

WWW.SPORTEXPORT.INFO



JACKET



WARM  
UP



TRACK  
SUITS



Brand: © Grand Sport  
International brand for good quality & design of sports wear & equipment  
Made in Thailand



Last Update: 25. August 2008



## Active Wear Brochure Warm-up Suits



Other Active Wear Brochures:

- Track Suits & Casual Jackets
- Polo Shirts & Tennis Wear

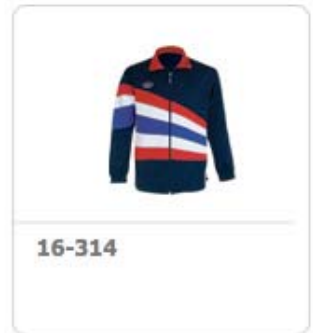
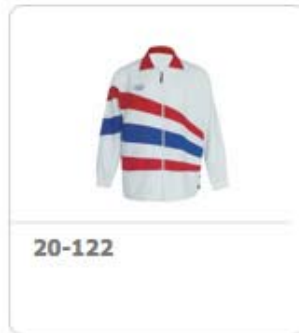
Not all listed products are in stock at all times

### Warm-Up

<b>Jackets / Overview</b>	<b>Page 3-4</b>
<b>Pants / Overview</b>	<b>Page 5-6</b>
<b>Sets / Details</b>	<b>Page 7-15</b>
<b>Pants / Details</b>	<b>Page 16-17</b>
<b>Size Specification</b>	<b>Page 18</b>

## Warm-Up Jackets / Overview

Available in several colours and sizes (see some id's/details below)





## Warm-Up Pants / Overview

Available in several colours and sizes (see some id's/details below)







 06-152



 06-149



 06-148



 06-147



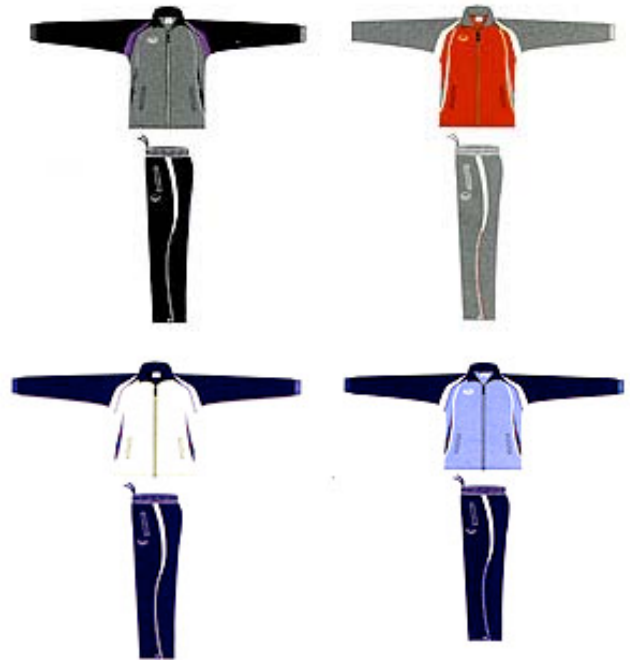
 06-144



 06-143

## Warm-Up Sets / Details

Jacket or Pants can be ordered with set or stand-alone



 **16-094**

Warm-Up Jacket  
Micro Fibre

grey-black, red-grey,  
khaki-navyblue, skyblue-navyblue

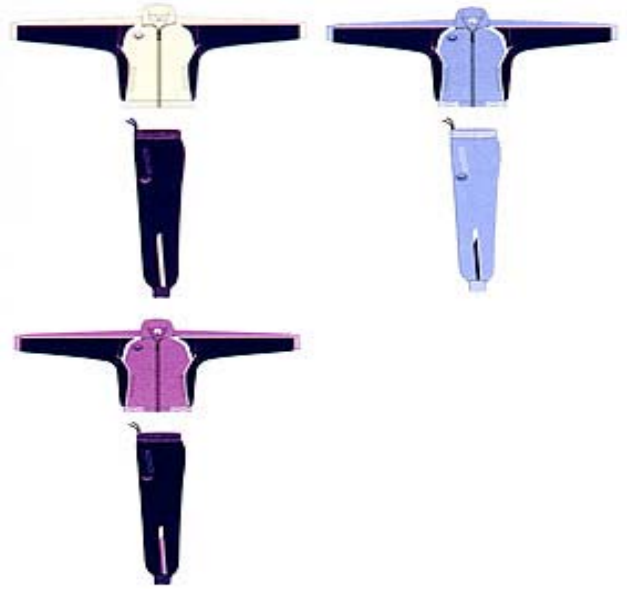
 **06-094**

Warm-Up Pants  
Micro Fibre

black with purple pipping,  
grey with red pipping,  
navyblue with khaki pipping,  
navyblue with skyblue pipping  
with upper white side panels

both in size: S M L XL 3L 4L





 **16-092**

Warm-Up Jacket Neo

khaki-navyblue, skyblue-navyblue  
purple-navyblue  
- with white pipping and side panels

 **06-092**

Warm-Up Pants  
Neo

navyblue with white-khaki side panels  
skyblue with navyblue-white side panels  
navyblue with purple-white side panels

both in size: S M L XL 3L 4L



**16-091**

Warm-Up Jacket  
Neo

green-navyblue, red-grey,  
grey-navyblue, skyblue-navyblue  
with colour pipping and panels

**06-091**

Warm-Up Pants  
Neo

navyblue-green with white pipping  
grey-red  
navyblue-grey  
Navyblue-skyblue  
skyblue-navyblue  
black-grey  
with colour pipping and panels

both in size: S M L XL 3L 4L



**16-090**

Warm-Up Jacket  
Neo

Red with black, navyblue with grey  
blue with black  
with pipping and colour panels  
Size: S M L XL 3L 4L

**06-090**

Warm-Up Pants  
Neo

black with red panels  
navyblue with skyblue panels  
blue with black panels  
with pipping  
Size: S M L XL 3L 4L

**Jacket**  **16-089**

**Product**  
**Fabric** Micro Fiber  
**Size** S M L XL 3L 4L

**Pants**  **06-089**

**Product**  
**Fabric** Micro Fiber  
**Size** S M L XL 3L 4L



sky blue



black



red



navy blue



navy blue



navy blue





**Jacket**  **16-088**  
**Product** NEO  
**Fabric** NEO  
**Size** S M L XL 3L 4L

**Pants**  **06-088**  
**Product** NEO  
**Fabric** NEO  
**Size** S M L XL 3L 4L



**Jacket**  **16-087**

**Product**

**Fabric** NEO

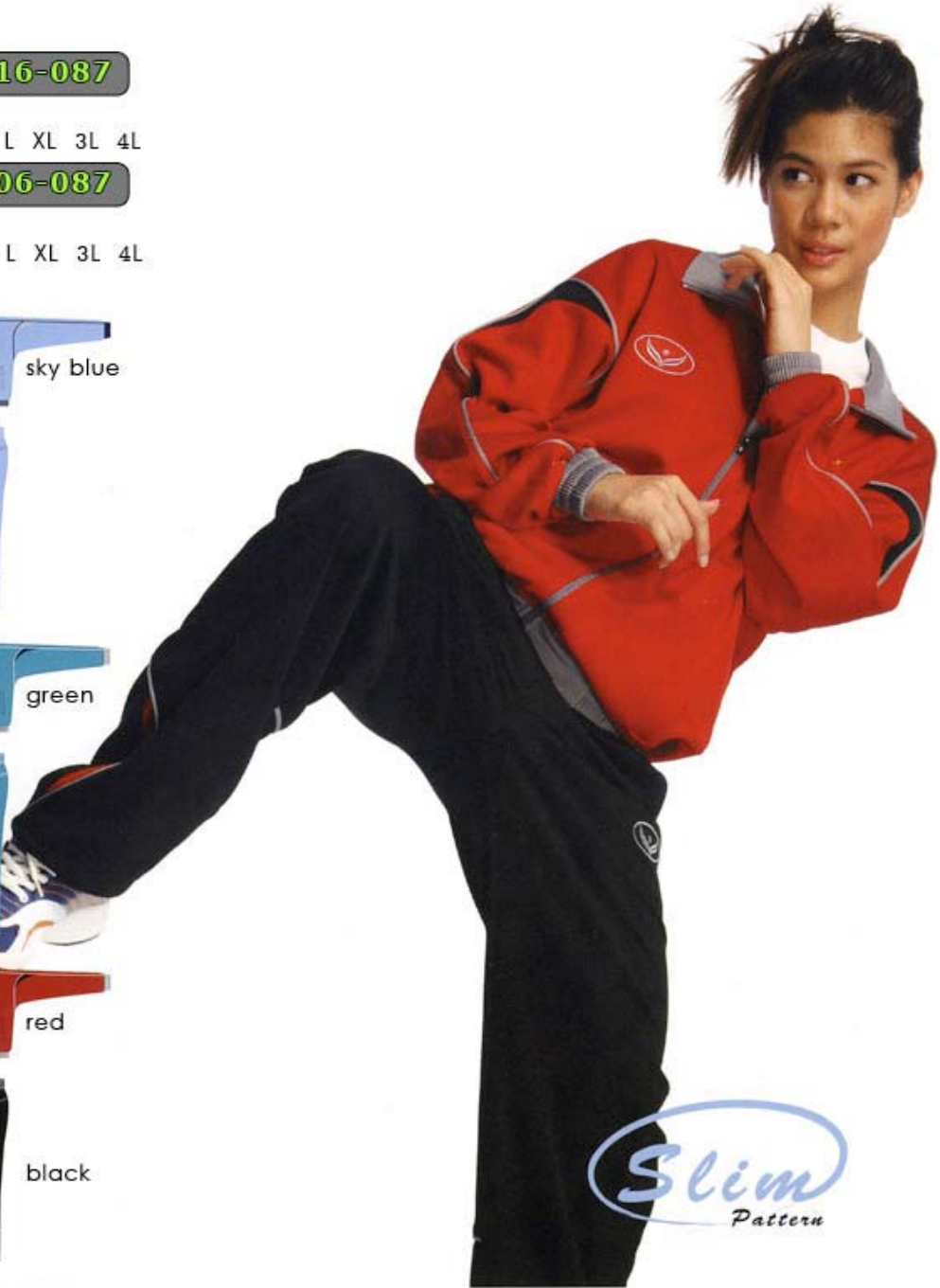
**Size** S M L XL 3L 4L

**Pants**  **06-087**

**Product**

**Fabric** NEO

**Size** S M L XL 3L 4L



*Slim*  
Pattern

grey green blue navyblue black



**Pants**  **06-149**

**Product**

**Fabric** NEO

**Size** S M L XL 3L 4L



**16-086**

**Jacket Product**

**Fabric** NEO  
**Size** S M L XL 3L 4L



sky blue



green



red



navy blue

**06-086**

**Pants Product**

**Fabric** NEO  
**Size** S M L XL 3L 4L



sky blue



green



black



navy blue

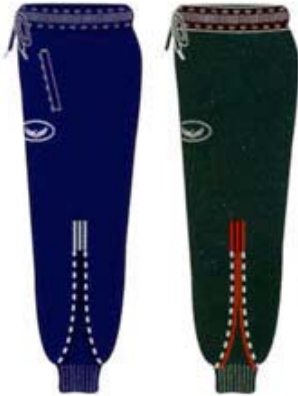


 **16-084**

Warm-Up Pants  
Micro fibre

red-black , navyblue-skyblue  
with pipping

Size: S M L XL 3L 4L



 **06-084**

Warm-Up Pants  
Micro fibre

blue, green-red  
with pipping

Size: S M L XL 3L 4L



 **16-082**

Warm-Up Pants  
Micro fibre

skyblue, green  
with pipping colour panels

Size: S M L XL 3L 4L



 **06-082**

Warm-Up Pants  
Micro fibre

green-skyblue, blue  
with pipping and colour panels

Size: S M L XL 3L 4L



## Warm-up Pants / Details

can be combined with any jacket above or stand-alone



06-153

Warm-Up Pants  
Micro Fibre

grey, black, blue, navy-blue  
with pipping and colour panels

Size: S M L XL 3L 4L



06-152

Warm-Up Pants  
Micro Fibre

grey, blue, navy-blue, black  
with pipping and colour panels

Size: S M L XL 3L 4L



 **06-149**

Warm-Up Pants  
Neo

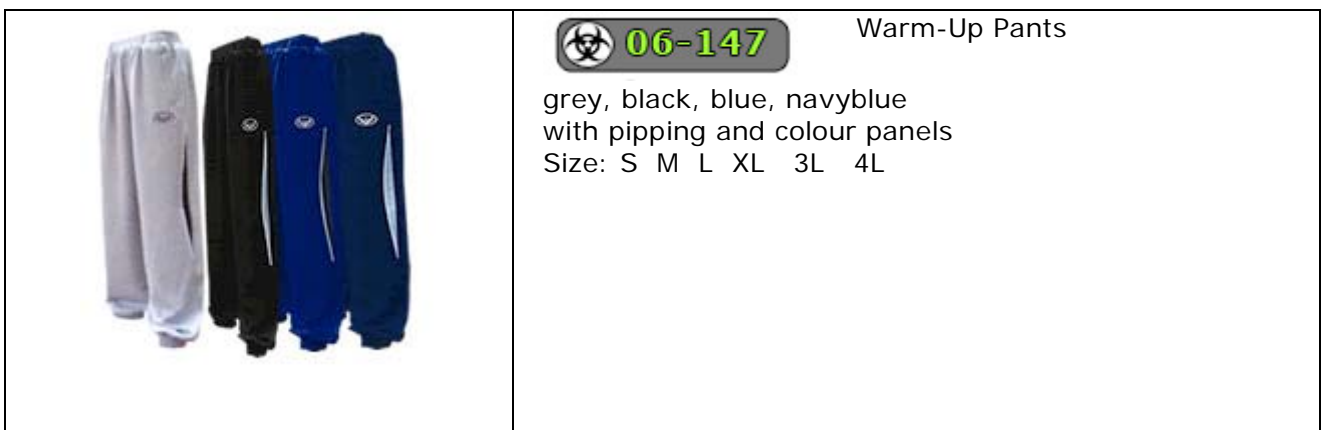
grey, navyblue, black, green, blue  
with pipping and colour panels  
Size: S M L XL 3L 4L



 **06-148**

Warm-Up Pants

blue, black, green, grey  
with pipping and colour panels  
Size: S M L XL 3L 4L



 **06-147**

Warm-Up Pants

grey, black, blue, navyblue  
with pipping and colour panels  
Size: S M L XL 3L 4L

Size Specification – Active Wear							
Description	Part	Size in CM					
		S	M	L	XL	3L	4L
Warm up Jacket * without lining Pro ID 16-xxx	Chest Total=2sides	102	107	112	117	122	127
	Length	69	71	73.5	76	79	81.3
Warm up Pants * without lining Pro ID 06-xxx	Waist Total=2sides	61	63.5	66.0	68.6	71.1	73.7
	Hip	102	106.7	111.8	116.8	121.9	127.0
	Length	96.5	99.1	101.6	104.1	106.7	109.2
Track Suit Jacket with lining Pro ID 20-xxx	Chest Total=2sides	122	127.0	132.1	137.2	142.2	147.3
	Length	63.5	66.0	68.6	71.1	73.7	76.2
Track Pants with lining Pro ID 10-xxx	Waist Total=2sides		63.5	66.0	68.6	71.1	73.7
	Hip		111.8	116.8	121.9	127.0	132.1
	Length		99.1	101.6	104.1	106.7	109.2
Jacket Pro ID 20-XXX	Chest Total=2sides		127.0	132.1	137.2	142.2	147.3
	Length		66.0	68.6	71.1	73.7	76.2
Tennis / Polo Shirt * Pro ID 12-XXX	Chest	96.5	101.6	106.7	111.8	116.8	121.9
	Total=2sides	68.6	71.1	73.7	76.2	78.7	81.3
	Length						
Tennis / Casual Shorts * Pro ID 02-XXX	Waist Total=2sides	71.1	76.2	81.3	86.4	91.4	96.5
	Hip	94	99.1	104.1	109.2	111.8	114.3
	Length	35.6	36.8	38.1	39.4	40.6	41.9
	Hip	37	39	41	43	44	45
	Length	14	14.5	15	15.5	16	16.5

\* see other Active Wear brochures

- Inch see next page

Size Specification – Active Wear							
Description	Part	Size in INCH					
		S	M	L	XL	3L	4L
Warm up Jacket * without lining Pro ID 16-xxx	Chest Total=2sides	40	42	44	46	48	50
	Length	27	28	29	30	31	32
Warm up Pants * without lining Pro ID 06-xxx	Waist Total=2sides	24	25	26	27	28	29
	Hip	39	41	43	45	47	49
	Length	38	39	40	41	42	43
Track Suit Jacket with lining Pro ID 20-xxx	Chest Total=2sides	48	50	52	54	56	58
	Length	25	26	27	28	29	30
Track Pants with lining Pro ID 10-xxx	Waist Total=2sides		25	26	27	28	29
	Hip		44	46	48	50	52
	Length		39	40	41	42	43
Jacket Pro ID 20-XXX	Chest Total=2sides		50	52	54	56	58
	Length		26	27	28	29	30
Tennis / Polo Shirt * Pro ID 12-XXX	Chest	38	40	42	44	46	48
	Total=2sides	27	28	29	30	31	32
	Length						
Tennis / Casual Shorts * Pro ID 02-XXX	Waist Total=2sides	28	30	32	34	36	38
	Hip	37	39	41	43	44	45
	Length	14	14.5	15	15.5	16	16.5

\* see other Active Wear brochures

- CM see above page